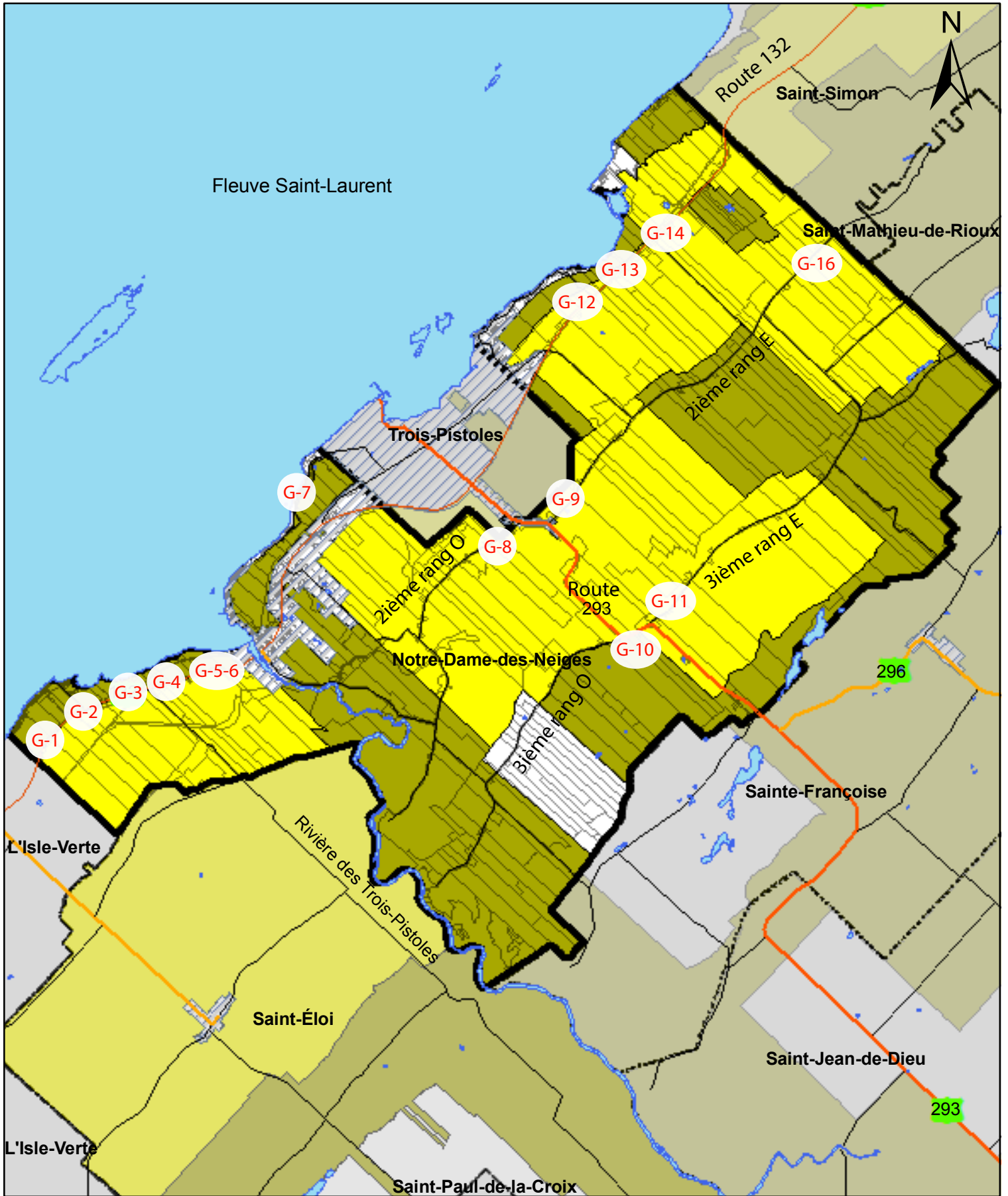


Annexe G - Découpage de la zone agricole

RCI concernant
les îlots destructurés

Notre-Dame-des-Neiges



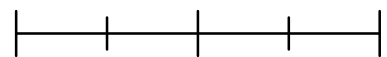
DÉCOUPAGE DE LA ZONE AGRICOLE

- Zonage agricole dynamique
- Zonage agricole agroforestier
- Zonage non-agricole
- Municipalité avoisinante
- Unité d'évaluation
- Périmètre urbanisation
- Plan d'eau

G-1 Localisation des îlots destructurés

- Limite de la municipalité
- Route nationale
- Route régionale
- Route collectrice
- Route locale

0 1 2 4 km




MRC
lesBasques



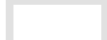


- Service de l'aménagement -

Projection cartographique : NAD 1983, MTM 7
Sources : CPTAQ,
Gouvernement du Québec

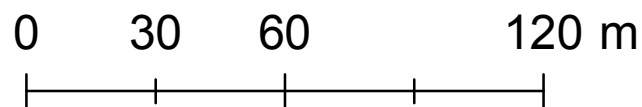
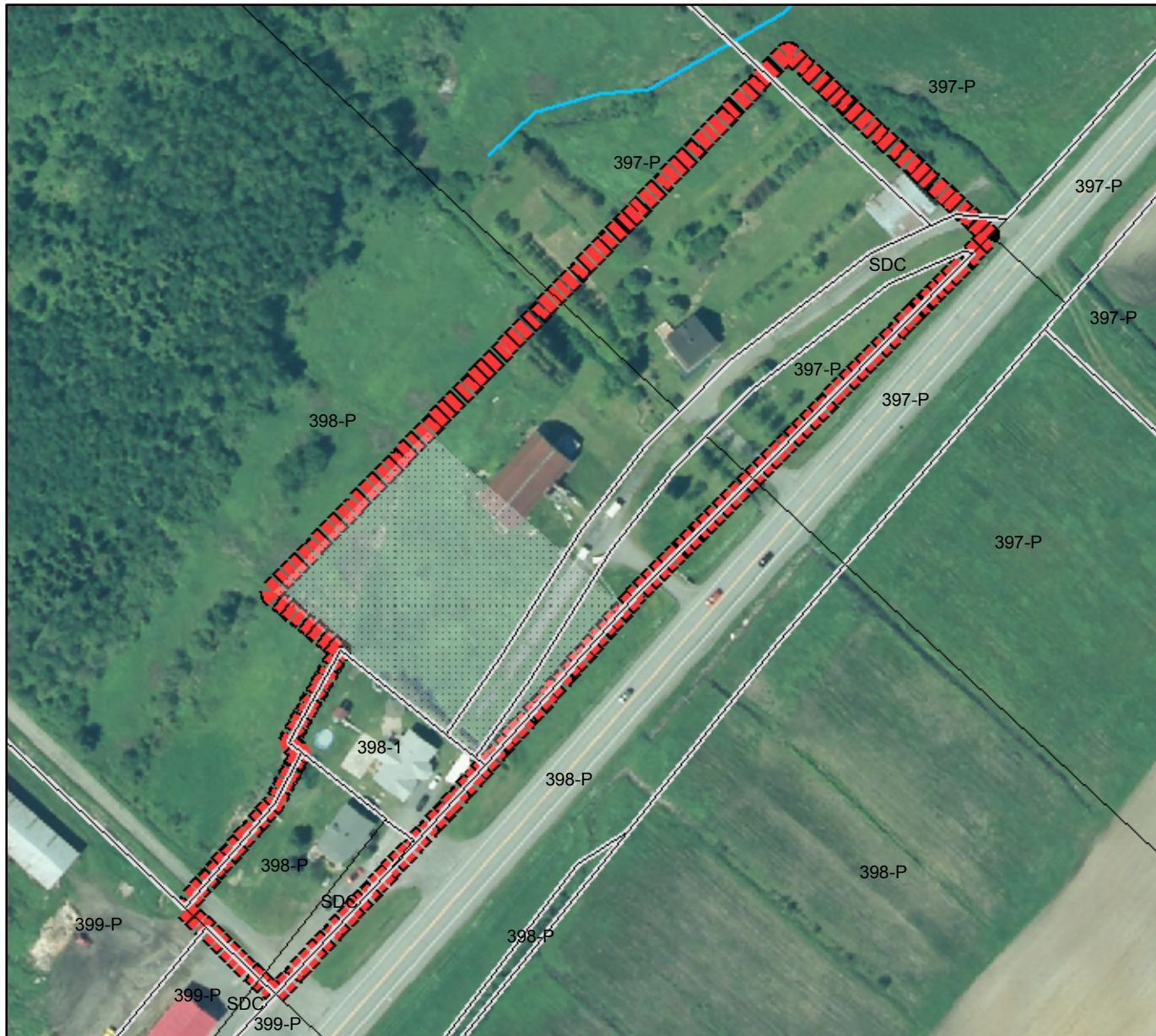
ANNEXE G - Feuille G-1

Informations relatives à l'îlot	
Nom de l'îlot (CPTAQ)	11045-1
Municipalité	Notre-Dame-des-Neiges
Type d'îlot	Type 1 : Morcellable
Superficie	1,8 ha
Terrains vacants	1
Zonage agricole	Agroforestier

Légende

-  Limite de l'îlot déstructuré
-  Terrains vacants
-  Unités d'évaluation
-  Lots
-  Hydrographie



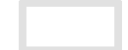


Notes de l'inspecteur :



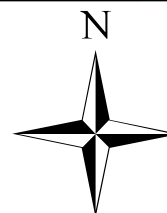
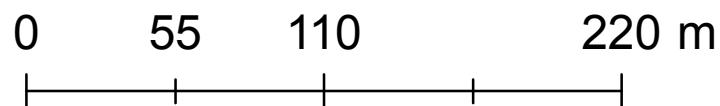
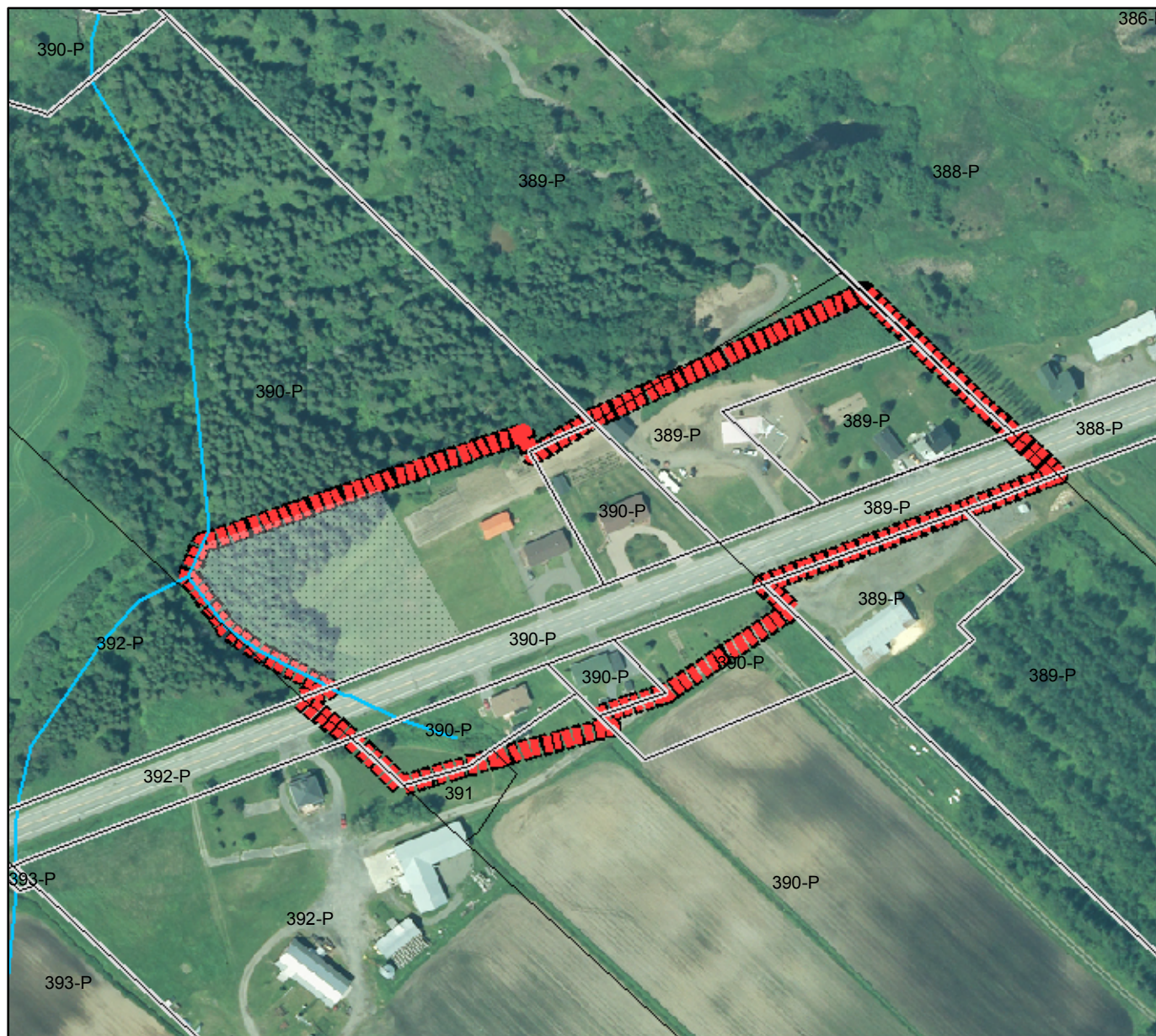
ANNEXE G - Feuille G-2

Informations relatives à l'îlot	
Nom de l'îlot (CPTAQ)	11045-2
Municipalité	Notre-Dame-des-Neiges
Type d'îlot	Type 1: Morcellable
Superficie	3,8 ha
Terrains vacants	1
Zonage agricole	Agroforestier et dynamique

Légende

-  Limite de l'îlot destructuré
-  Terrains vacants
-  Unités d'évaluation
-  Lots
-  Hydrographie





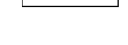
Notes de l'inspecteur :



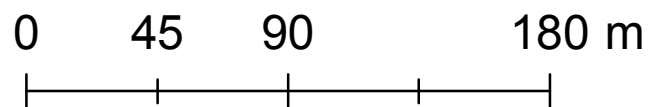
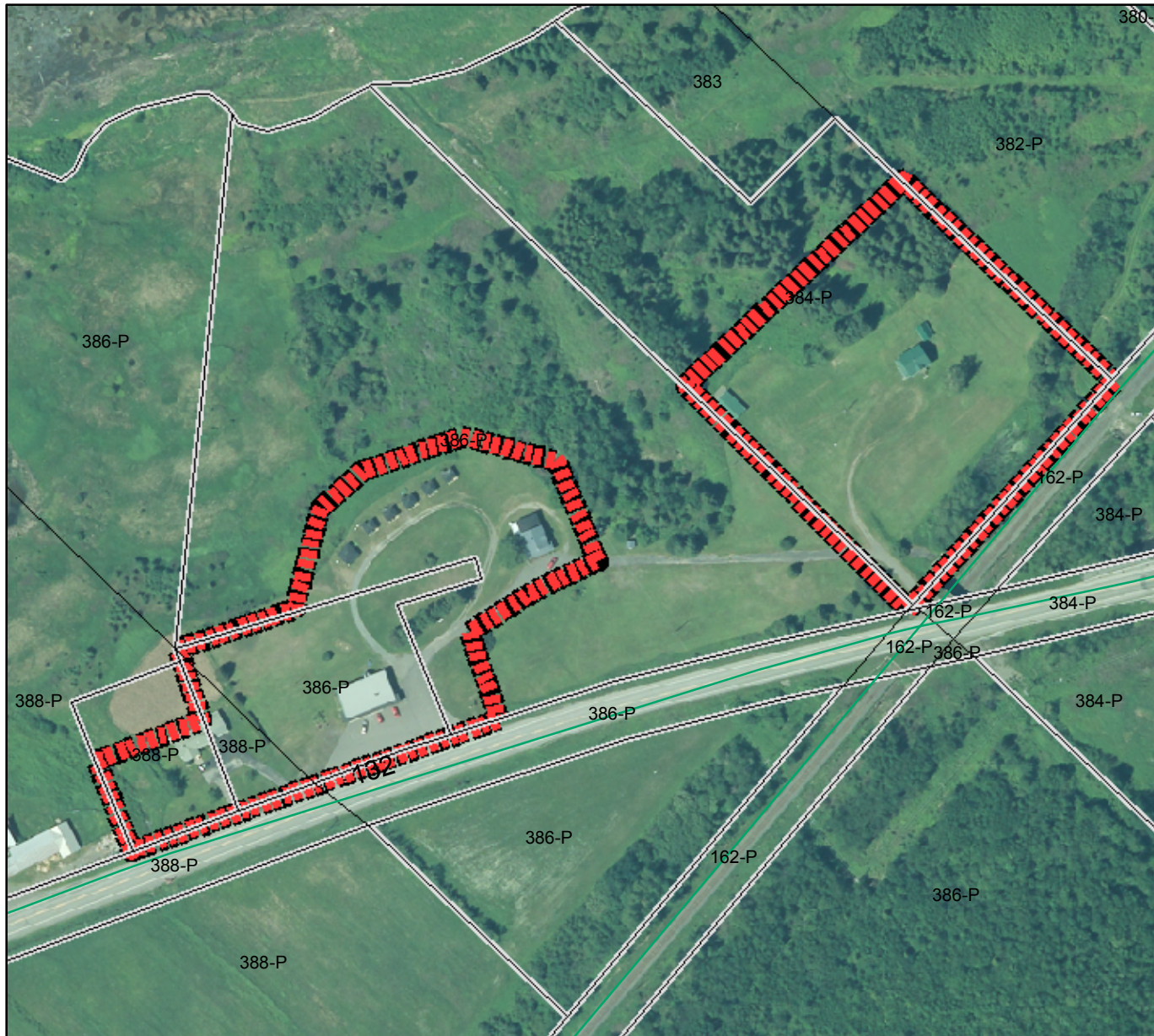
ANNEXE G - Feuille G-3

Informations relatives à l'îlot	
Nom de l'îlot (CPTAQ)	11045-3
Municipalité	Notre-Dame-des-Neiges
Type d'îlot	Type 1: Morcellable
Superficie	3 ha
Terrains vacants	0
Zonage agricole	Agroforestier

Légende

-  Limite de l'îlot destructuré
-  Terrains vacants
-  Unités d'évaluation
-  Lots
-  Hydrographie



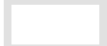


Notes de l'inspecteur :



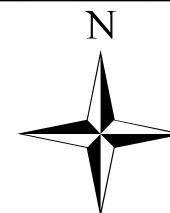
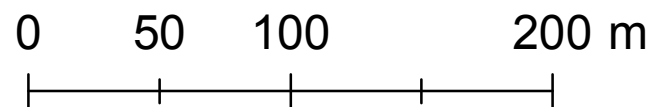
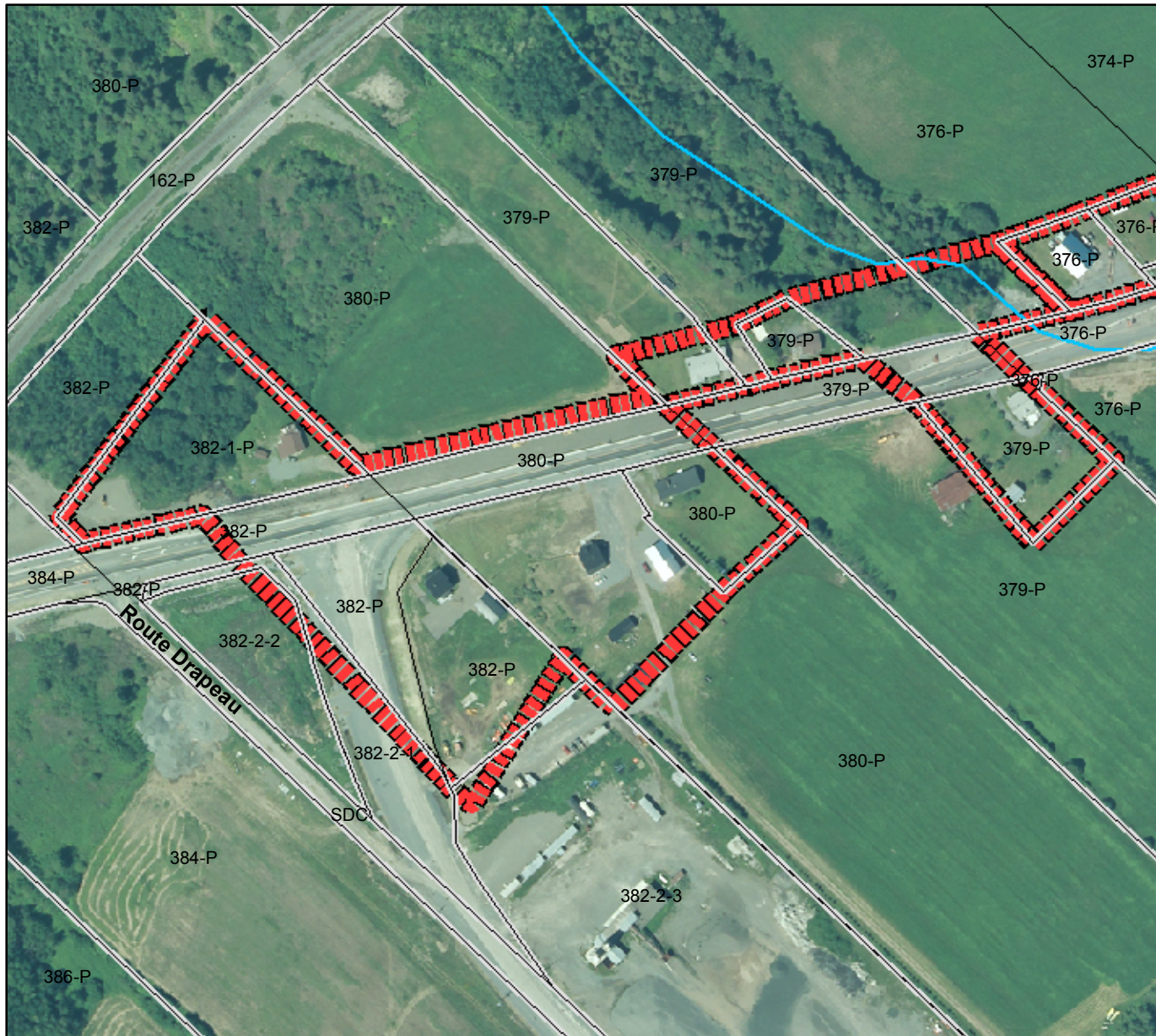
ANNEXE G - Feuille G-4

Informations relatives à l'îlot	
Nom de l'îlot (CPTAQ)	11045-4
Municipalité	Notre-Dame-des-Neiges
Type d'îlot	Type 1 : Morcellable
Superficie	4,2 ha
Terrains vacants	0
Zonage agricole	Dynamique et agroforestier

Légende

-  Limite de l'îlot destructuré
-  Terrains vacants
-  Unités d'évaluation
-  Lots
-  Hydrographie

Notes de l'inspecteur :








ANNEXE G - Feuille G-7

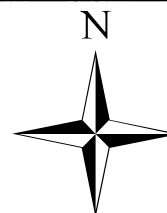
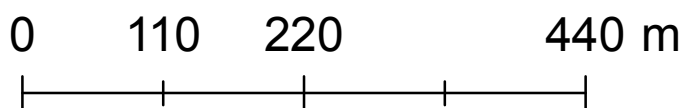


Informations relatives à l'îlot	
Nom de l'îlot (CPTAQ)	11045-7
Municipalité	Notre-Dame-des-Neiges
Type d'îlot	Type 1 : Morcellable
Superficie	5 ha
Terrains vacants	0
Zonage agricole	Agroforestier

Légende

-  Limite de l'îlot destructuré
-  Terrains vacants
-  Unités d'évaluation
-  Lots
-  Hydrographie



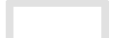


Notes de l'inspecteur :



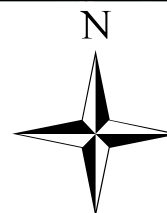
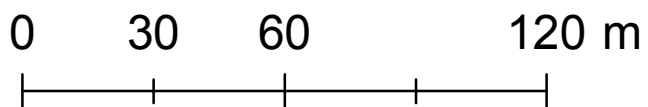
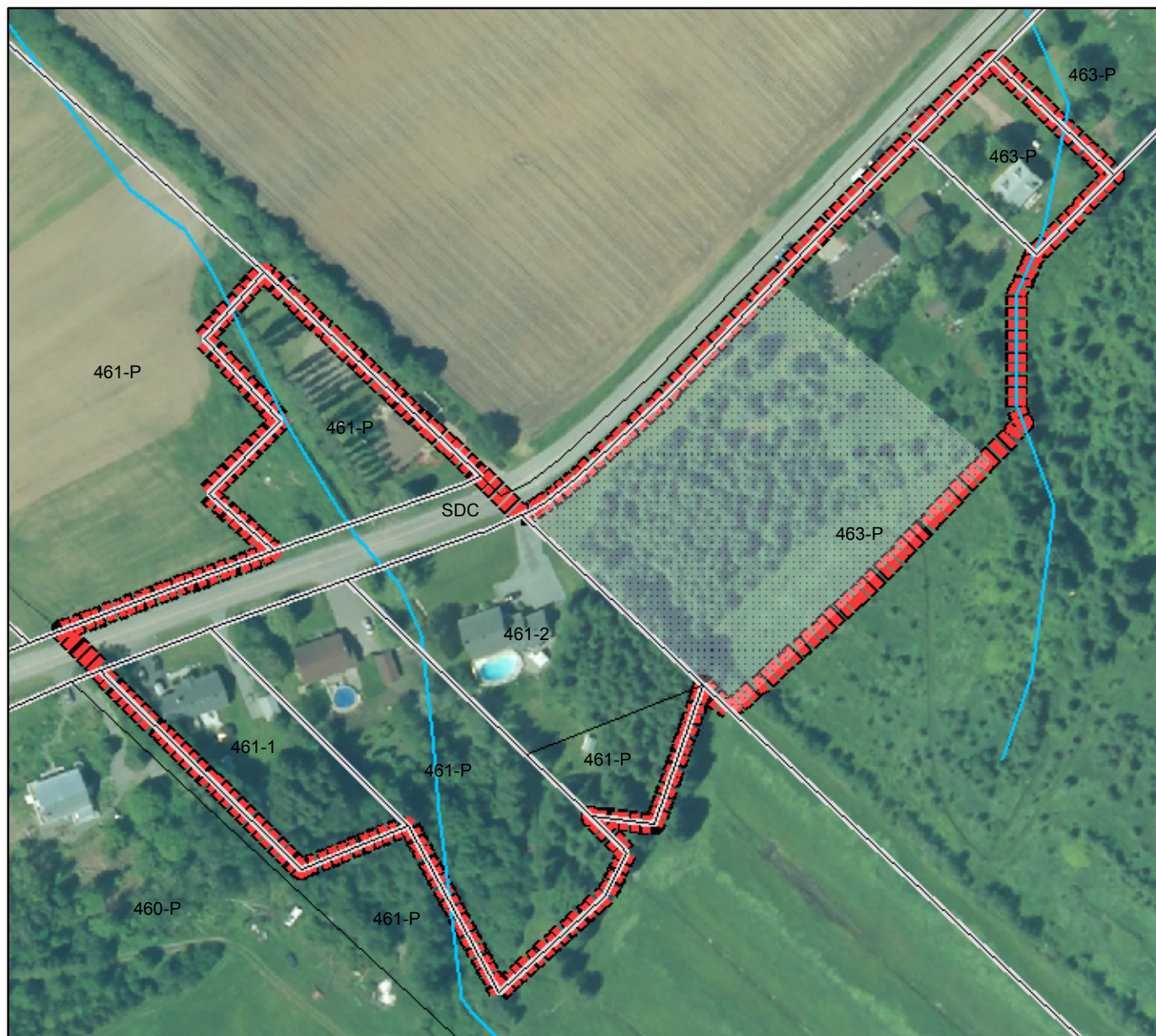
ANNEXE G - Feuille G-8

Informations relatives à l'îlot	
Nom de l'îlot (CPTAQ)	11045-8
Municipalité	Notre-Dame-des-Neiges
Type d'îlot	Type 1 : Morcellable
Superficie	2,7 ha
Terrains vacants	1
Zonage agricole	Dynamique

Légende

-  Limite de l'îlot déstructuré
-  Terrains vacants
-  Unités d'évaluation
-  Lots
-  Hydrographie



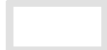


Notes de l'inspecteur :



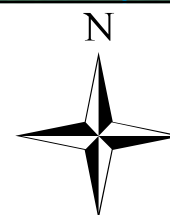
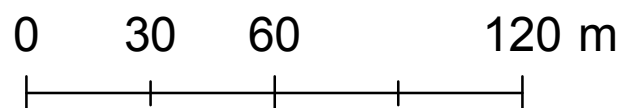
ANNEXE G - Feuille G-9

Informations relatives à l'îlot	
Nom de l'îlot (CPTAQ)	11045-9
Municipalité	Notre-Dame-des-Neiges
Type d'îlot	Type 1 : Morcellable
Superficie	2,4 ha
Terrains vacants	2
Zonage agricole	Dynamique

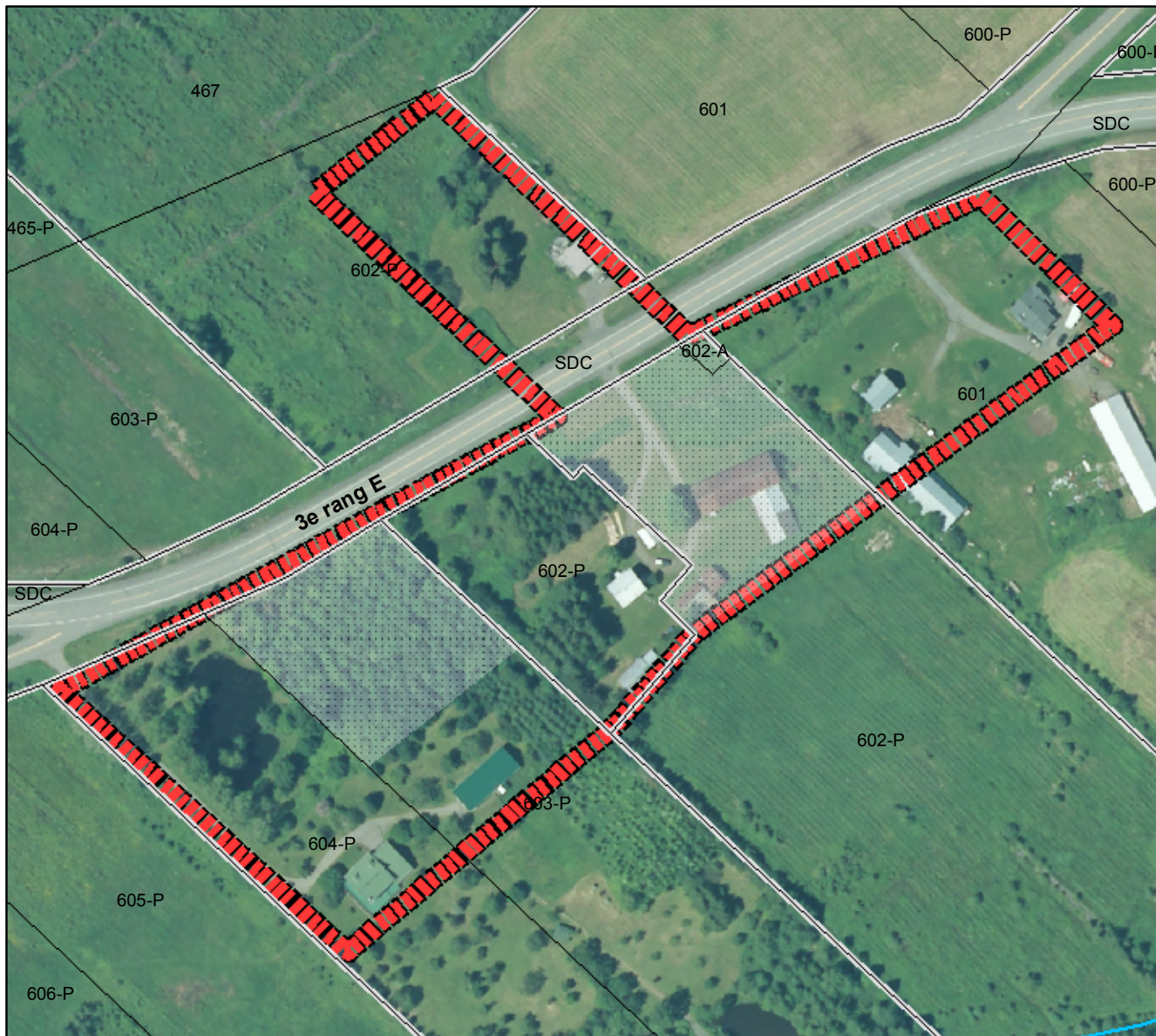
Légende

-  Limite de l'îlot déstructuré
-  Terrains vacants
-  Unités d'évaluation
-  Lots
-  Hydrographie

Notes de l'inspecteur :





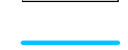


ANNEXE G - Feuillet G-10

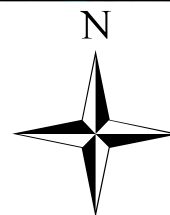
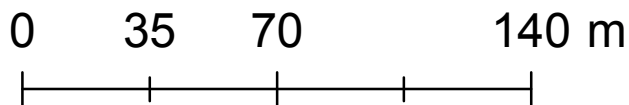


Informations relatives à l'îlot	
Nom de l'îlot (CPTAQ)	11045-10
Municipalité	Notre-Dame-des-Neiges
Type d'îlot	Type 1 : Morcellable
Superficie	3,5 ha
Terrains vacants	2
Zonage agricole	Agroforestier et dynamique

Légende

-  Limite de l'îlot destructuré
-  Terrains vacants
-  Unités d'évaluation
-  Lots
-  Hydrographie

Notes de l'inspecteur :



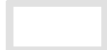




ANNEXE G - Feuille G-11

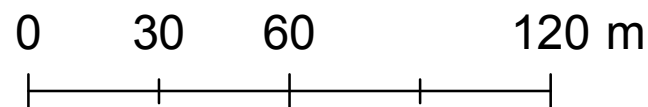


Informations relatives à l'îlot	
Nom de l'îlot (CPTAQ)	11045-11
Municipalité	Notre-Dame-des-Neiges
Type d'îlot	Type 1 : Morcellable
Superficie	1,3 ha
Terrains vacants	1
Zonage agricole	Dynamique

Légende

-  Limite de l'îlot déstructuré
-  Terrains vacants
-  Unités d'évaluation
-  Lots
-  Hydrographie

Notes de l'inspecteur :





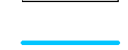


ANNEXE G - Feuillet G-12

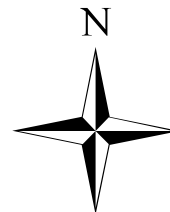
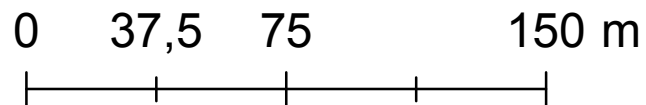


Informations relatives à l'îlot	
Nom de l'îlot (CPTAQ)	11045-12
Municipalité	Notre-Dame-des-Neiges
Type d'îlot	Type 1 : Morcellable
Superficie	2,8 ha
Terrains vacants	1
Zonage agricole	Dynamique

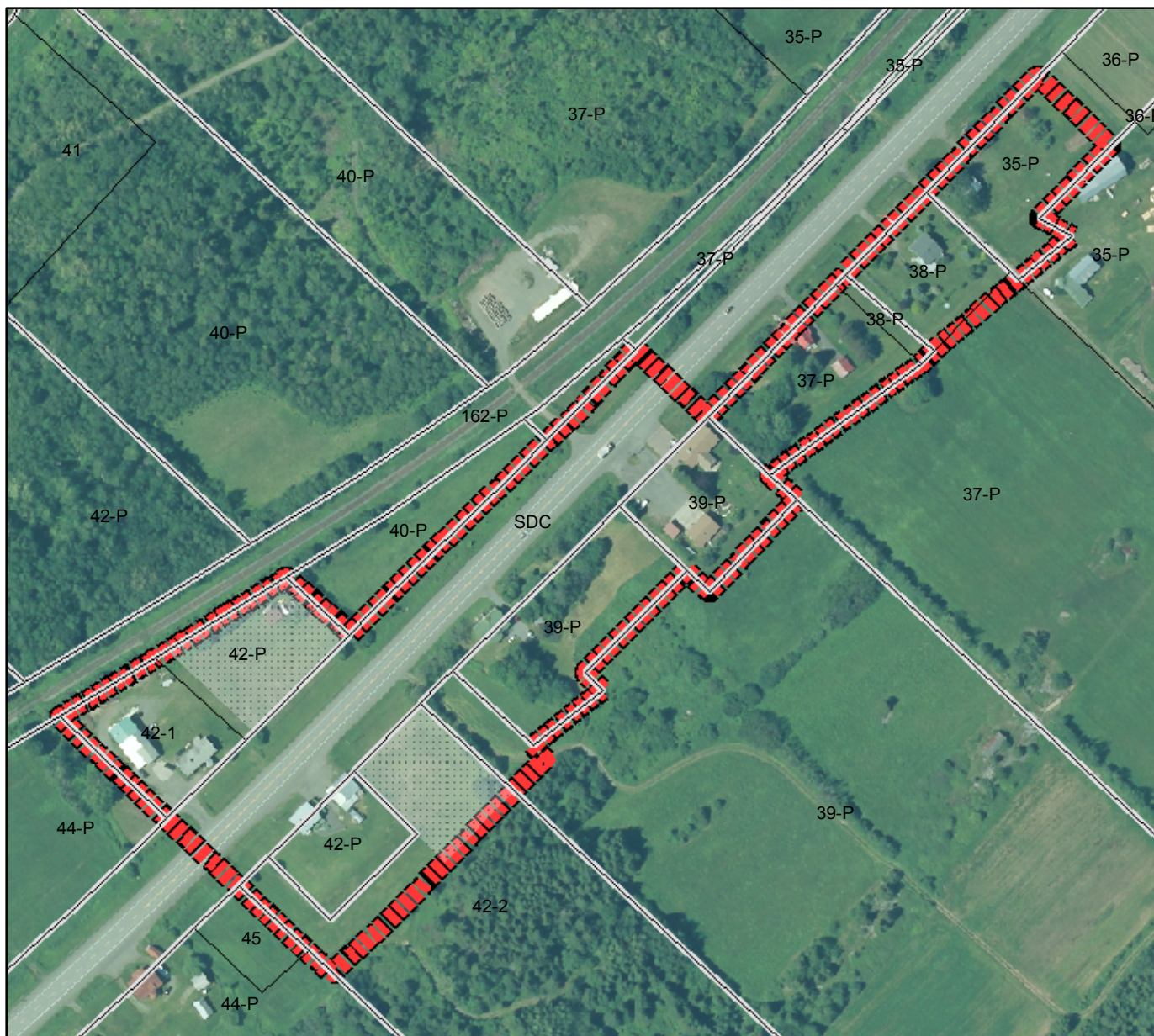
Légende

-  Limite de l'îlot destructuré
-  Terrains vacants
-  Unités d'évaluation
-  Lots
-  Hydrographie

Notes de l'inspecteur :





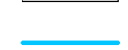


ANNEXE G - Feuillet G-13

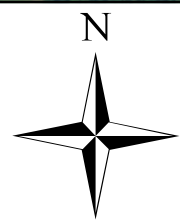
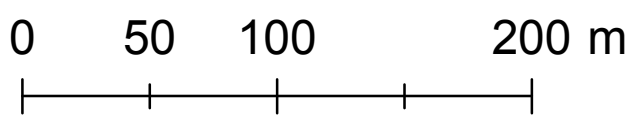


Informations relatives à l'îlot	
Nom de l'îlot (CPTAQ)	11045-13
Municipalité	Notre-Dame-des-Neiges
Type d'îlot	Type 1 : Morcellable
Superficie	4,8 ha
Terrains vacants	2
Zonage agricole	Dynamique

Légende

-  Limite de l'îlot déstructuré
-  Terrains vacants
-  Unités d'évaluation
-  Lots
-  Hydrographie



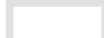


Notes de l'inspecteur :



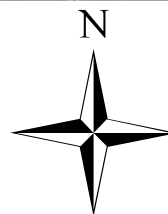
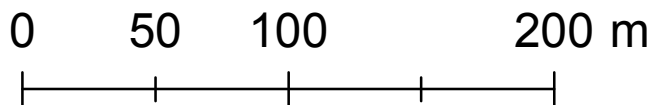
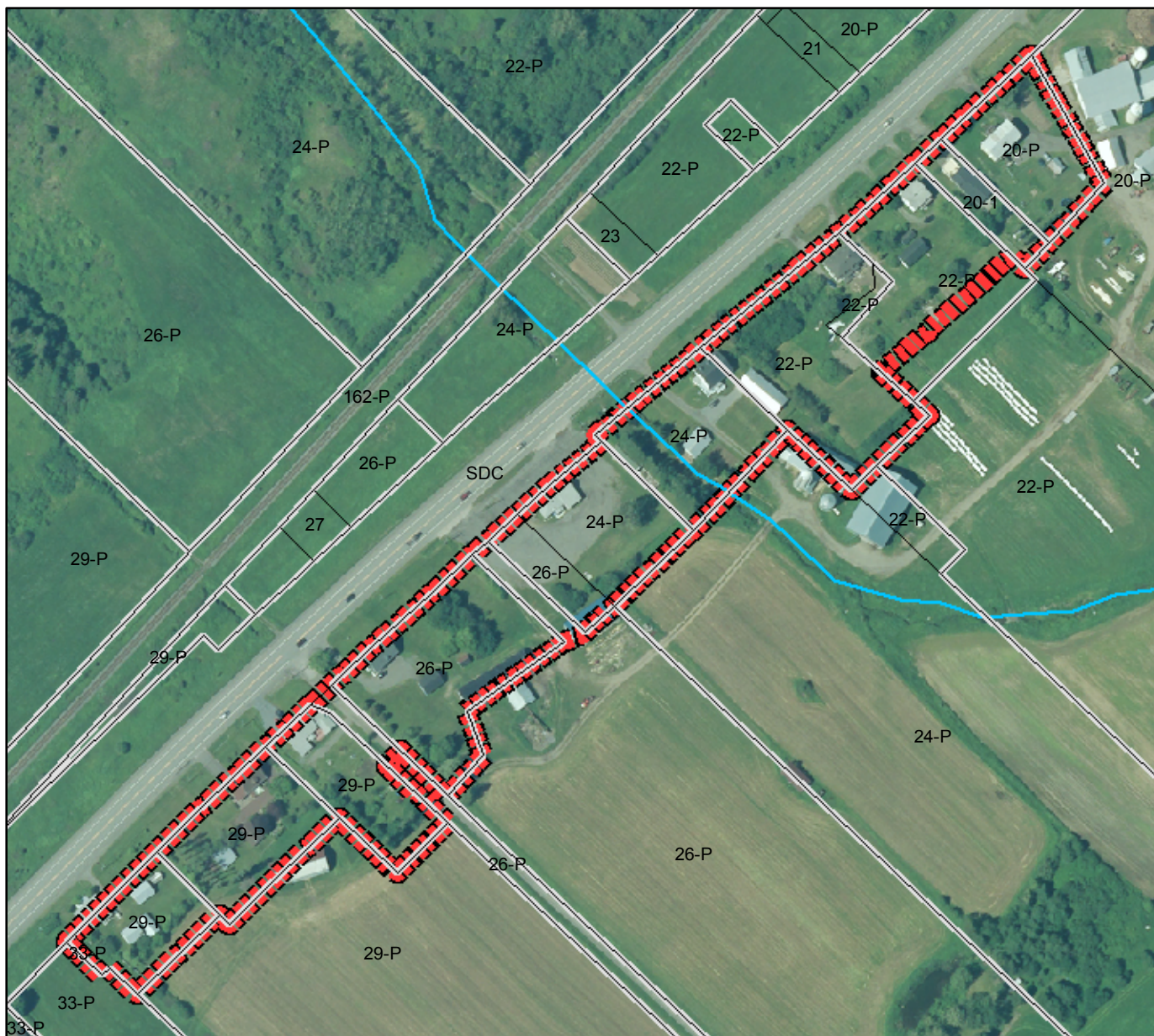
ANNEXE G - Feuillet G-14

Informations relatives à l'îlot	
Nom de l'îlot (CPTAQ)	11045-14
Municipalité	Notre-Dame-des-Neiges
Type d'îlot	Type 1 : Morcellable
Superficie	3 ha
Terrains vacants	0
Zonage agricole	Dynamique

Légende

-  Limite de l'îlot déstructuré
-  Terrains vacants
-  Unités d'évaluation
-  Lots
-  Hydrographie



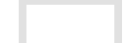


Notes de l'inspecteur :



ANNEXE G - Feuillet G-16

Informations relatives à l'îlot	
Nom de l'îlot (CPTAQ)	11045-16
Municipalité	Notre-Dame-des-Neiges
Type d'îlot	Type 1 : Morcellable
Superficie	2,1 ha
Terrains vacants	1
Zonage agricole	Dynamique

Légende

-  Limite de l'îlot déstructuré
-  Terrains vacants
-  Unités d'évaluation
-  Lots
-  Hydrographie

Notes de l'inspecteur :

